



[www.kings-group.net](http://www.kings-group.net)

473 High Street  
Tottenham N17 6QA  
Tel: 020 8801 2696

**Grovelands Road, London, N15 6BW**



**40% Shared ownership £130,000**

40% Shared Ownership

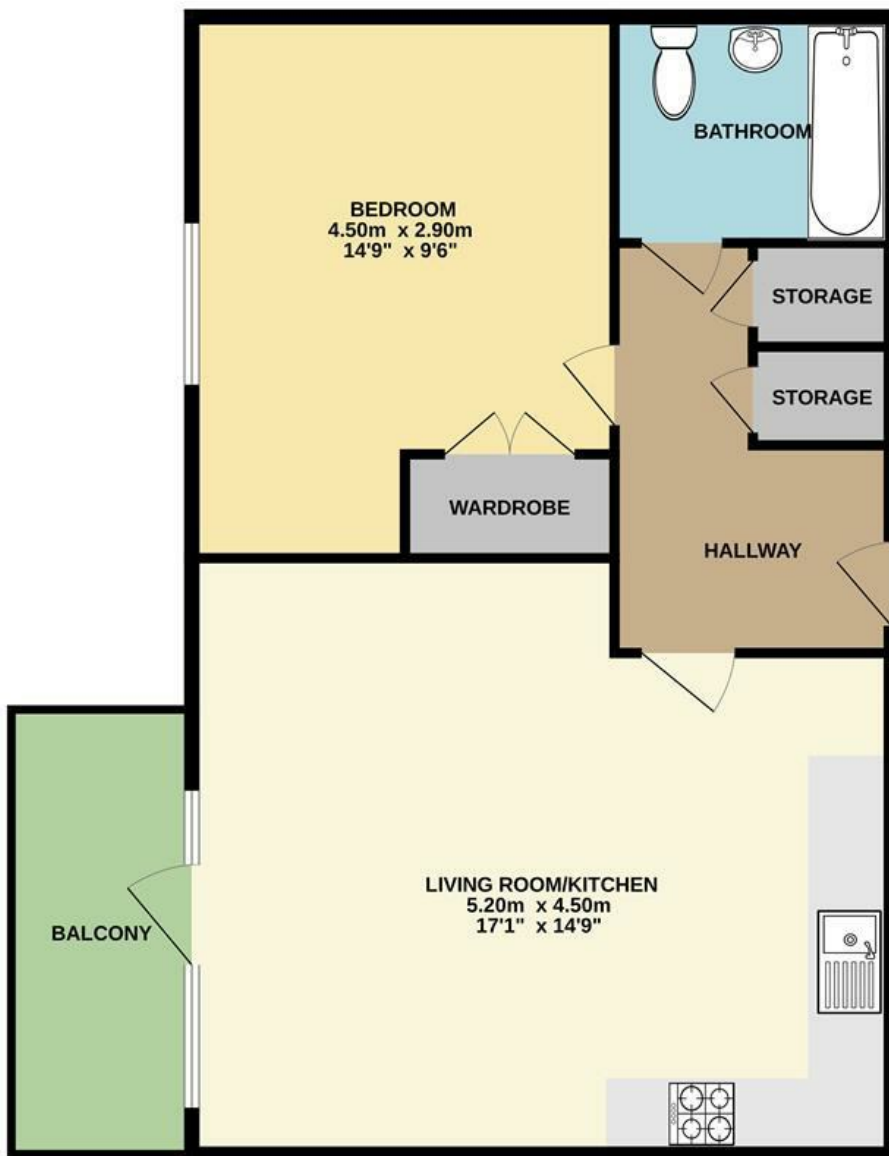
Kings Group is proud to present this immaculate one-bedroom apartment, set on the third floor of a secure gated development in a highly sought-after location.

This well-maintained flat features a spacious open-plan lounge and modern fitted kitchen, leading to a private balcony, along with a generous double bedroom with fitted wardrobes and a stylish three-piece bathroom suite. Additional benefits include secure video entry system and lift access throughout the building.

Ideally situated on Grovelands Road, the property is moments from the scenic Markfield Park and the River Lea, offering beautiful walks and green open spaces, including nearby Springfield Park. The vibrant area of Stoke



THIRD FLOOR  
46.0 sq.m. (495 sq.ft.) approx.



TOTAL FLOOR AREA : 46.0 sq.m. (495 sq.ft.) approx.

Whilst every attempt has been made to ensure the accuracy of the floorplan contained here, measurements of doors, windows, rooms and any other items are approximate and no responsibility is taken for any error, omission or mis-statement. This plan is for illustrative purposes only and should be used as such by any prospective purchaser. The services, systems and appliances shown have not been tested and no guarantee as to their operability or efficiency can be given.  
Made with Metropix ©2025

Energy Efficiency Rating		Current	Potential
Very energy efficient - lower running costs			
(92 plus) <b>A</b>			
(81-91) <b>B</b>			
(69-80) <b>C</b>			
(55-68) <b>D</b>			
(39-54) <b>E</b>			
(21-38) <b>F</b>			
(1-20) <b>G</b>			
Not energy efficient - higher running costs			
<b>England &amp; Wales</b>	EU Directive 2002/91/EC	77	77

Environmental Impact (CO <sub>2</sub> ) Rating		Current	Potential
Very environmentally friendly - lower CO <sub>2</sub> emissions			
(92 plus) <b>A</b>			
(81-91) <b>B</b>			
(69-80) <b>C</b>			
(55-68) <b>D</b>			
(39-54) <b>E</b>			
(21-38) <b>F</b>			
(1-20) <b>G</b>			
Not environmentally friendly - higher CO <sub>2</sub> emissions			
<b>England &amp; Wales</b>	EU Directive 2002/91/EC		

